



**Kiowa Land and Sales**

"Making a difference to the land and the people"

## *Allaire Ranch*



*Farley, NM*

*1,761 total acreage*

*1404 acres with 357 acres state lease*

*Excellent grazing country split into 3 different parcels:*

*Parcel 1:* 563 acres on the North side of Farley

*Parcel 2:* A fixer-upper house and corrals on 1.45 acres in town  
with 840 deeded acres & 357 acres state lease on South side of Farley

*~~Parcel 3:~~* 40 acres with 599 acres state lease on South of Hwy 56 **SOLD!!!**

*Open grass country with good water near the historic farming area of Farley*

*Priced to sell..*

**\$492,000**

7L

[sales@kiowaland.com](mailto:sales@kiowaland.com)

NM

Toll Free 877.704.4077

X

**Norman "Punch" Hennigan, Qualifying Broker**

PO Box 5, 116 South Second, Raton, NM 87740

Office 575.445.4077 ♦ [www.kiowaland.com](http://www.kiowaland.com) ♦ Fax 575.445.4079



**Parcel 1:**  
**T25N, R27E**  
**Sections 26 & 26   Sections 35**

**Deeded Acres**

**Sec. 26**

**SW4 - 160 ac**

**Sec. 27**

**SE4 - 160 ac**

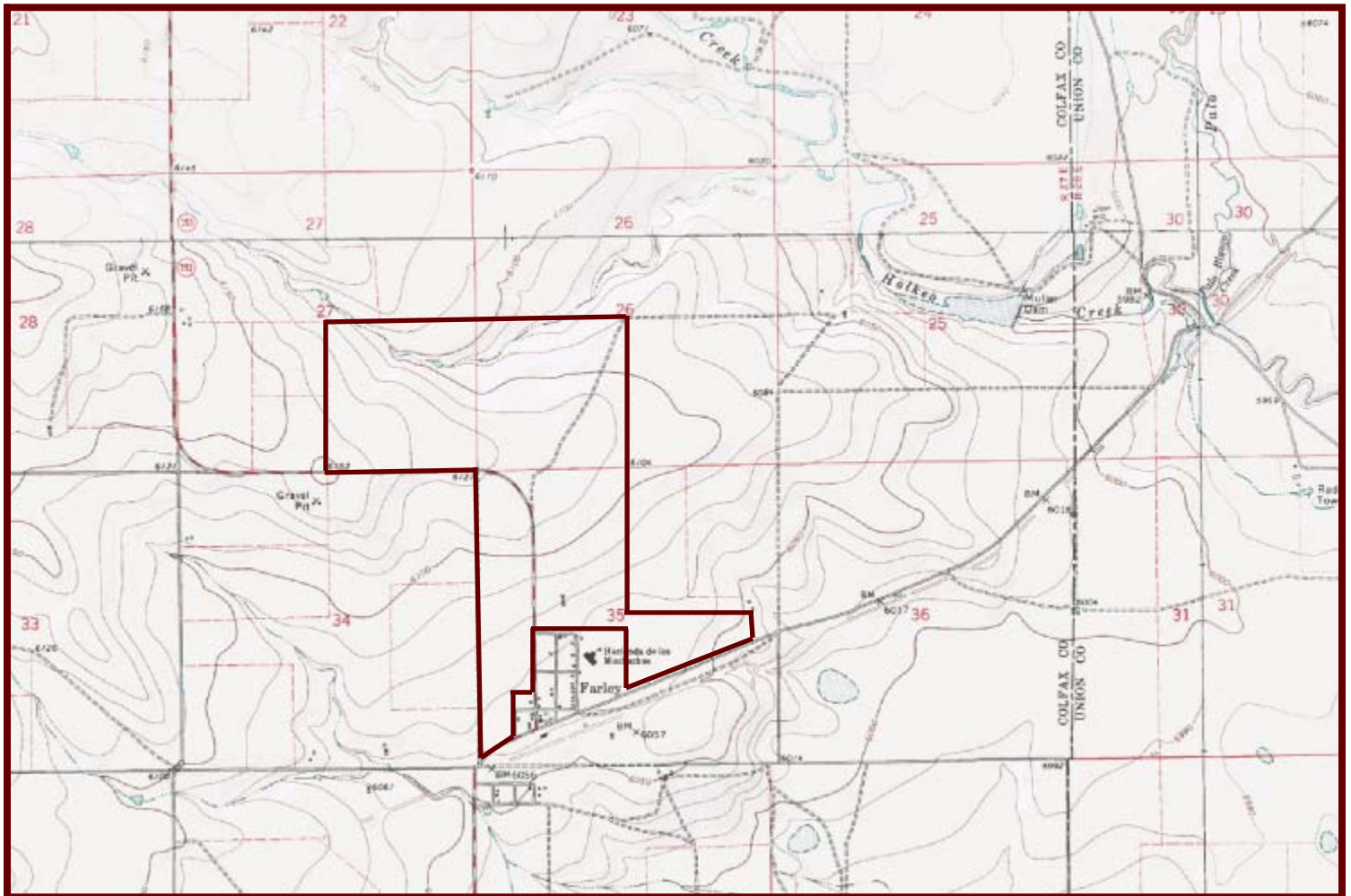
**Sec. 35**

**NW4 - 160 ac;**

**S2 (N of railroad) - 158.971 ac less: 9.5 ac, .61 ac, 40.771 ac, 13.295, 11.7; Total ac – 83.095 ac**

**Total Deeded Acres - 563.095 ac**

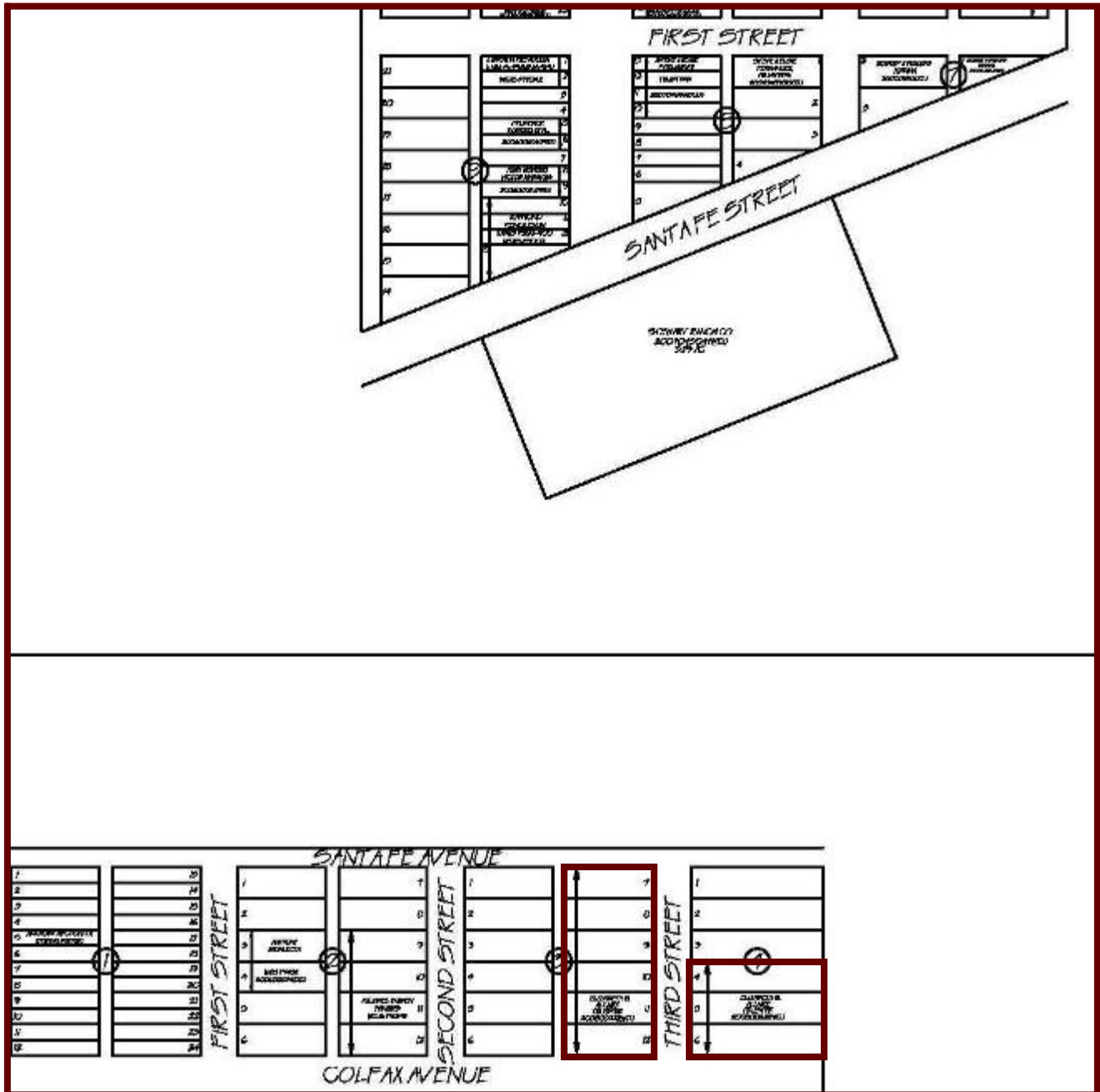
**\$200,000**



**Allaire Ranch  
House and Corrals  
Fairview Subdivision in Farley, NM**

**Block 3: Lots 4 thru 12  
Lot size each at 50' x 140'**

**Total acreage - 1.446 ac**



## **Parcel 2:**

**T24N, R27E**

**Sections 1 & 2    Sections 11 & 12**

### **Deeded Acres**

#### **Sec. 1**

**Lot 5 - 40 ac; Lot 11 - 40 ac; NW4SE4 - 40 ac; SE4SE4 - 40 ac; Total ac - 160 ac**

#### **Sec. 2**

**Lot 10 - 40 ac; Lot 11 - 40 ac; SW4SE4 - 40 ac; Total ac - 120 ac**

#### **Sec. 11**

**SW4SE4 - 40 ac; NE4NE4 - 40 ac; Total ac - 80 ac**

#### **Sec. 12**

**W2 - 320 ac; SE4 -160 ac; Total ac - 480 ac**

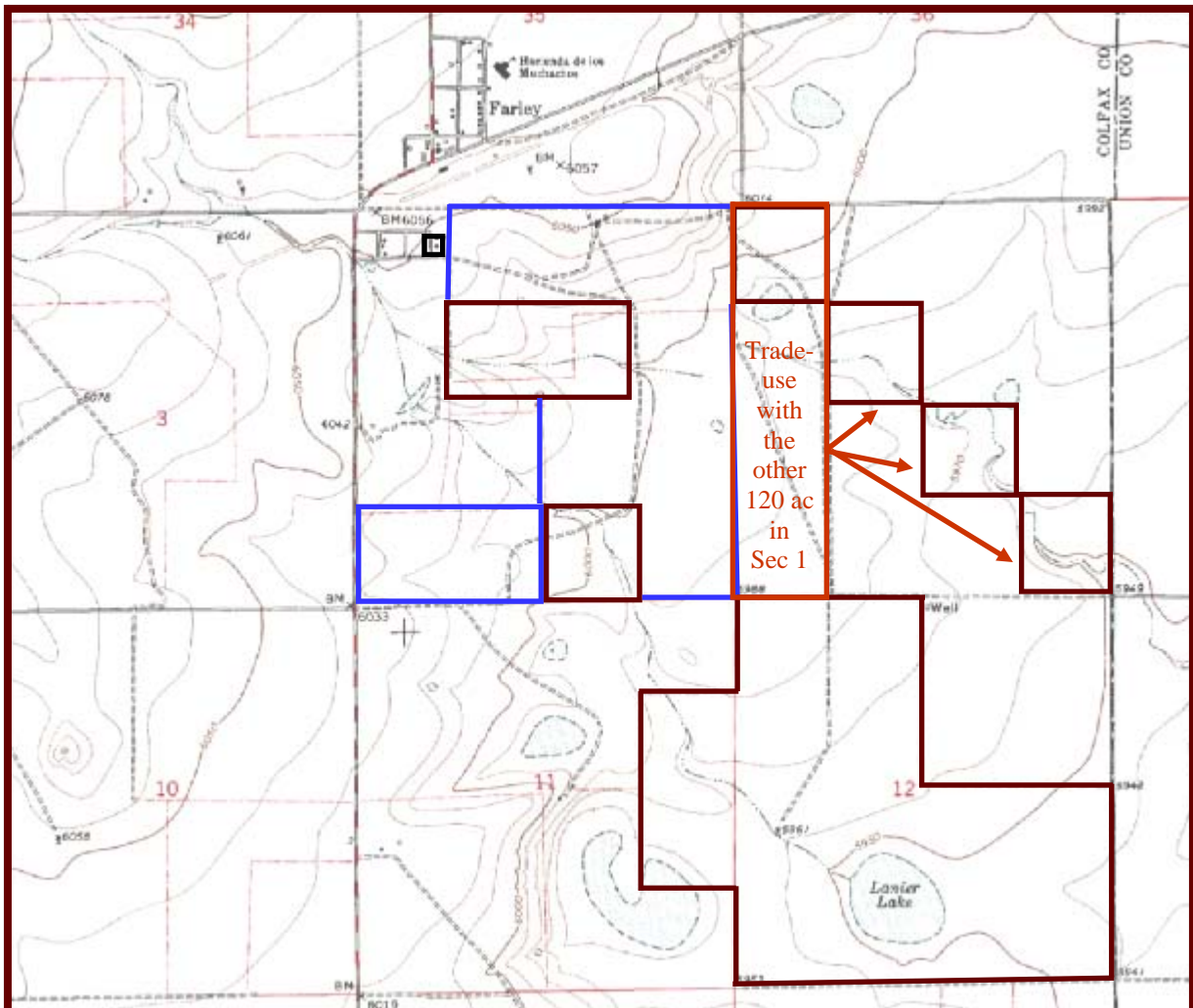
**Total Deeded acres - 840 ac @ \$335,650**

### **State Lease**

#### **Sec. 2**

**Lot 1 - 9.06 ac; Lot 2 - 9.19 ac; Lot 3 - 9.31 ac; Lot 4 - 9.44 ac; S2SW4, N2SE4, SE4SE4 - 200 ac; Lot 6 - 40 ac;  
Lot 7 - 40 ac; Lot 8 - 40 ac**

**Total State Lease - 357 ac**



**Kiowa Land and Sales ♦ Norman "Punch" Hennigan, Qualifying Broker**

Office 575.445.4077 ♦ www.kiowaland.com ♦ sales@kiowaland.com ♦ Fax 575.445.4079

**Parcel 3:**  
**T25N, R27E**  
**Section 22**

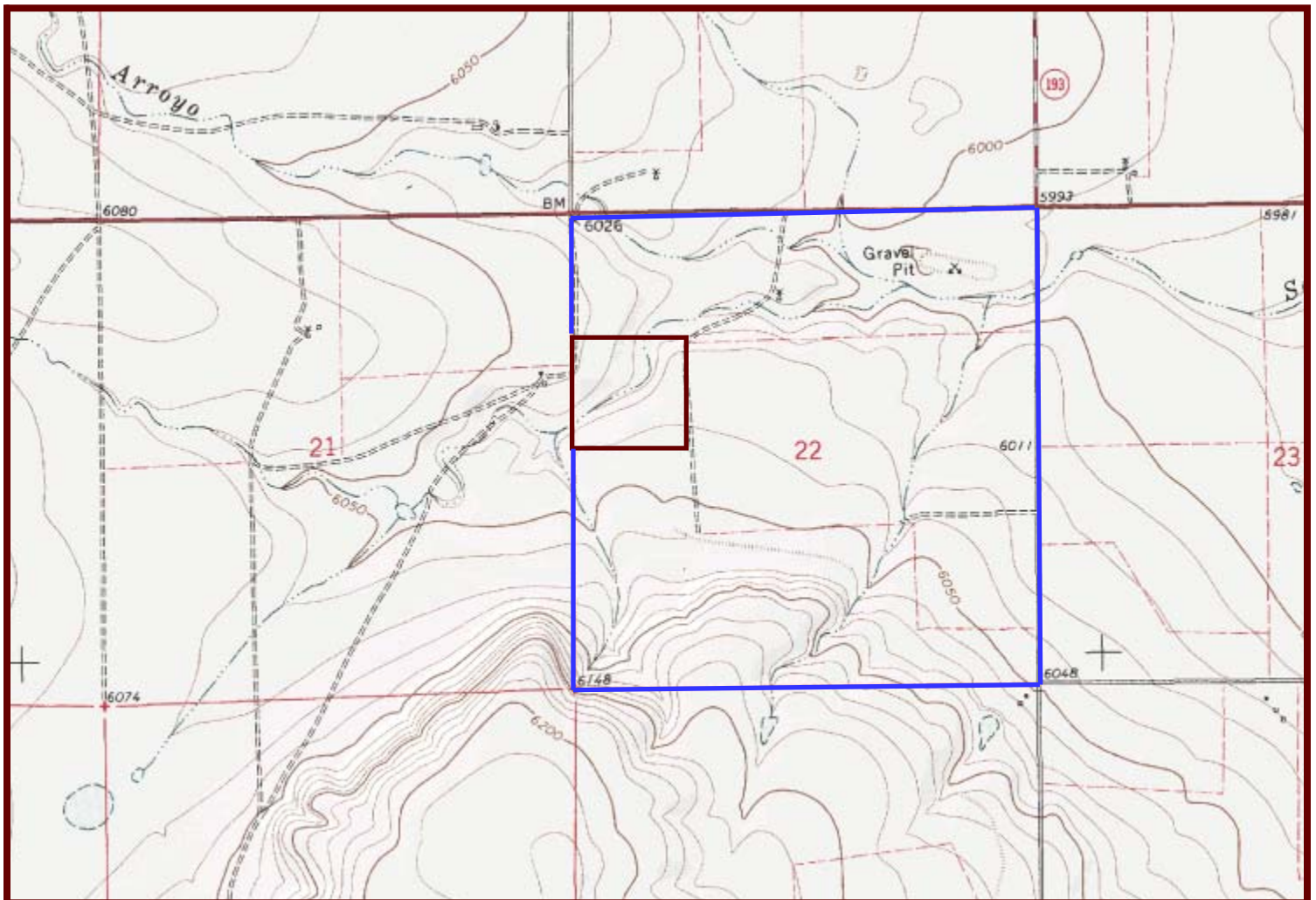
**Deeded Acres**  
Sec. 22 - SWNW

**SOLD!!!**    **Total Deeded acres - 40 ac**    **SOLD!!!**

**State Lease**  
**Sec. 22**

Pt. NE4 - 76.80 ac; N2NW4, Pt. SE4NW4 - 99.20 ac; Pt. NE4SW4 - 19.20 ac;  
W2SW4, SE4SW4, SE4SW4, Pt. NW4SE4 - 139.25 ac; SW4SE4, Pt. SE4SE - 51.05 ac;  
Pt. S2NE4 - 57.82 ac; Pt. SE4NW4 - 28.91; Pt. NE4SW4 - 28.91 ac; NE4SE4, Pt. NW4SE4 - 68.91 ac; Pt.  
SE4SE4 - 28.95 ac

**Total State Lease - 599 ac**



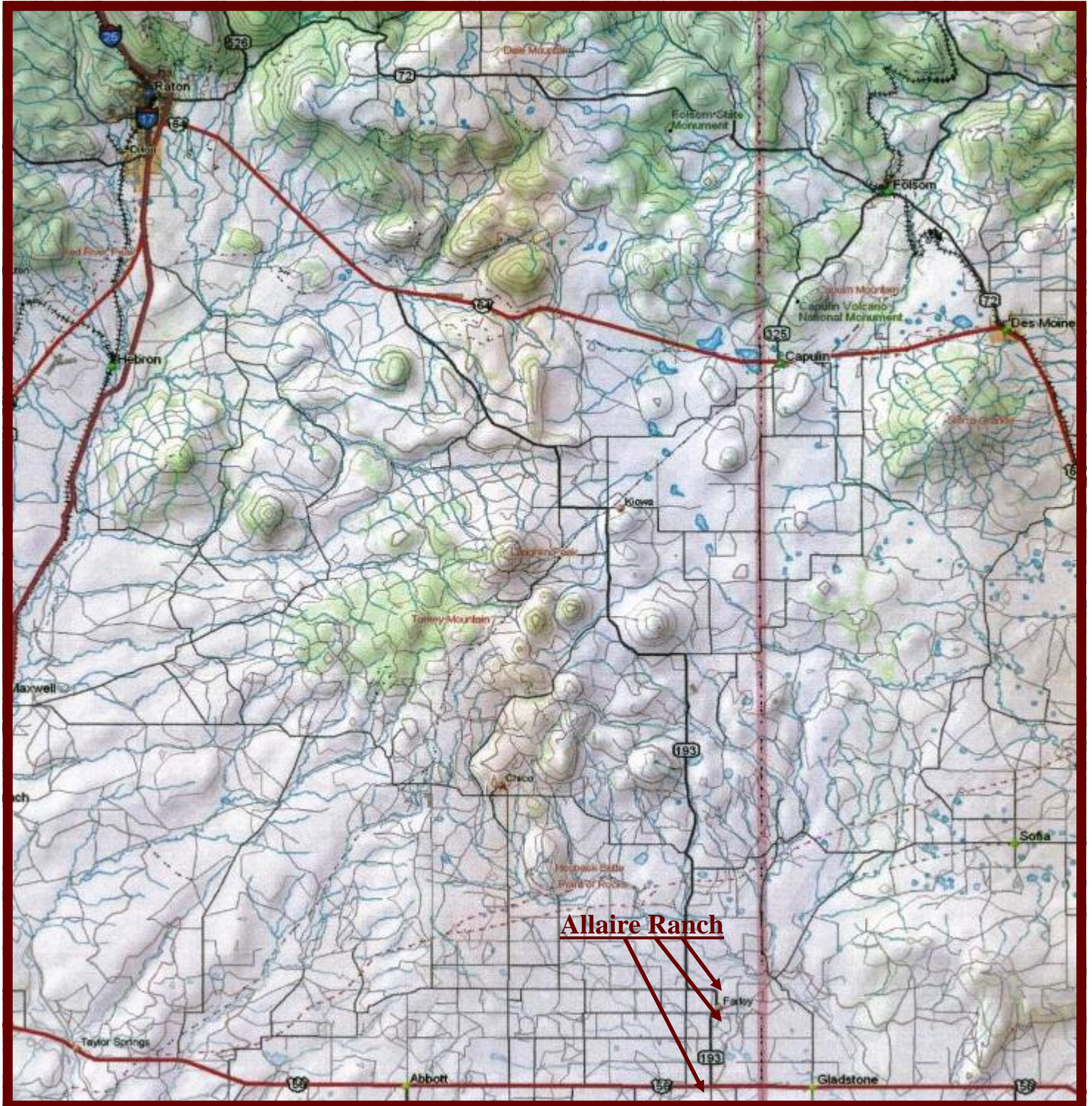
# Allaire Ranch

**1,444.541 acres Deeded & 956 State lease**

**2,400 Total acres**

**\$350/deeded ac**

**\$505,590**



**Kiowa Land and Sales ♦ Norman "Punch" Hennigan, Qualifying Broker**  
Office 575.445.4077 ♦ [www.kiowaland.com](http://www.kiowaland.com) ♦ [sales@kiowaland.com](mailto:sales@kiowaland.com) ♦ Fax 575.445.4079